

REVISION HISTORY				
Rev Level	Rev Date	Change Made	Reason for Change	Effective
A	13/05/06		Product Release	13/05/06
A1	18/09/08	Title update to DPS200-206	Error Correction	18/09/08

Approvals		
	Name	Date
Written by:	Sam Sadot	13/5/06
Engineering:	Moti Heller	13/5/06
Sales & Marketing:	Mor Allon	13/5/06
Management:	Yossi Ben Ami	13/5/06

CUSTOMER	SIZE	CAGE CODE	S5417	DWG. NO.	7216-DOC1-10	REV	A1
	SCALE		RELEASE DATE	13/5/2006	SHEET	2	OF 5

Input:

Input Voltage: 36-72 VDC
 Input Connector: 3 Position Terminal Block for M3.5 screw
 Inrush Current: 20A maximum
 Efficiency: 83% typical at 36 VDC, full load
 86% typical at 72 VDC, full load
 Input Protection: Internal Line Fuse: SMT type submini 5A 250V
 Reverse Polarity: Internally Protected by a Power Mos-Fet

Output Voltage & Current:

<i>Output</i>	<i>Output Voltage</i>	<i>I Min</i>	<i>I Max</i>	<i>I Peak</i>
V1	5.0 V	0A	30A	32.5A
V2	+12 V	0A	5A	5.5A

Output Power: 200 W
 Line Regulation: $\pm 0.2\%$ for Vin (Min) to Vin (Max).
 Load Regulation:
 V1 $\pm 2\%$ for load change from zero to full load
 V2 $\pm 4\%$ for load change from zero to full load
 Ripple & Noise
 V1 50mV P-P
 V2 120mV P-P
 Output Voltage Adjustment Range: V1 only $\pm 5\%$
 Initial Set Point Tolerance: V2 $\pm 1\%$
 Overshoot & Undershoot: Less than 1% at turn ON-OFF
 Transient Load Response: $\pm 5\%$ Max. Deviation for load change of 25% to 75% , at slew rate of 1A/usec, recovery time less then 500Msec
 Turn On Delay: 2 sec. Maximum.
 Turn-On Rise Time: 50Msec Max.
 Over-current Protection: V1 105% to 130% of Im, constant current limit, automatic recovery
 Over-voltage Protection: Outputs shut down at 125% Max. of nominal, AC input must Recycled to reset.
 Temperature Protection: Shutdown due to excessive internal temperature 90 to 97°C (base plate) with automatic recovery.
 Remote Sense: On V1
 Current Share: Yes
 V1- N+1 single wire
 V2 natural current share
 Hot Swap: Internal O-Ring diode on both outputs

CUSTOMER	SIZE	CAGE CODE	S5417	DWG. NO.	7216-DOC1-10	REV	A1
	SCALE		RELEASE DATE	13/5/2006	SHEET	3	OF 5

Signals & Commands

Inhibit: Active low, all output shut down.
 Power OK: Open collector, active low when output drops 10% below rated output.

Environmental Specifications:

Temperature: Operating: -20°C to +50°C (de-rating linearly to 70 °C with 50% de-rating).
 Storage: -40°C to +85°C.
 Temperature Coefficient: 0 to 70°C ± 0.005%/°C
 Cooling: 100W free convection cooling (base plate cooling). 150W continuous forced air cooling (250lfm, or 15CFM min.)
 Humidity: Maximum 5% to 95% RH non-condensating.
 Altitude: Operating 10,000 ft. Non- operating 40,000 ft.
 Vibration: Three orthogonal axes at 1 octave/min, 5 min dwell at four major resonances at 0.75G peak, 5Hz to 500Hz.

Safety Regulatory & EMC Specifications:

MEETS FCC CLASS B, CISPR 22 CLASS B, EN55022 CLASS B – With an external input line filter
 EN6000-4-2 ESD +8KV AIR +4KV CONTACT DISCHARGE, performance criteria B
 EN61000-4-3 RADIATED IMMUNITY: 80-1000Mhz 3V/m, AM 80% (1KHz), criteria A
 EN61000-4-4 FAST TRANSIENT: 1KV for AC power port, 0.5KV for DC power I/O and signals Port, performance criteria B
 EN61000-4-5 SURGE: 2KV common mode and 1KV differential mode
 EN61000-4-6 3VRMS, 80% A.M. BY 1kHz
 EN61000-4-8 3A /m at 50Hz, performance criteria A.
 EN61000-4-11 VOLTAGE Dips and interruption: 30% reduction for 10mSec –Criteria B, 60% For 100mSec. Criteria C, 95% reduction for 5000mSec Criteria C.

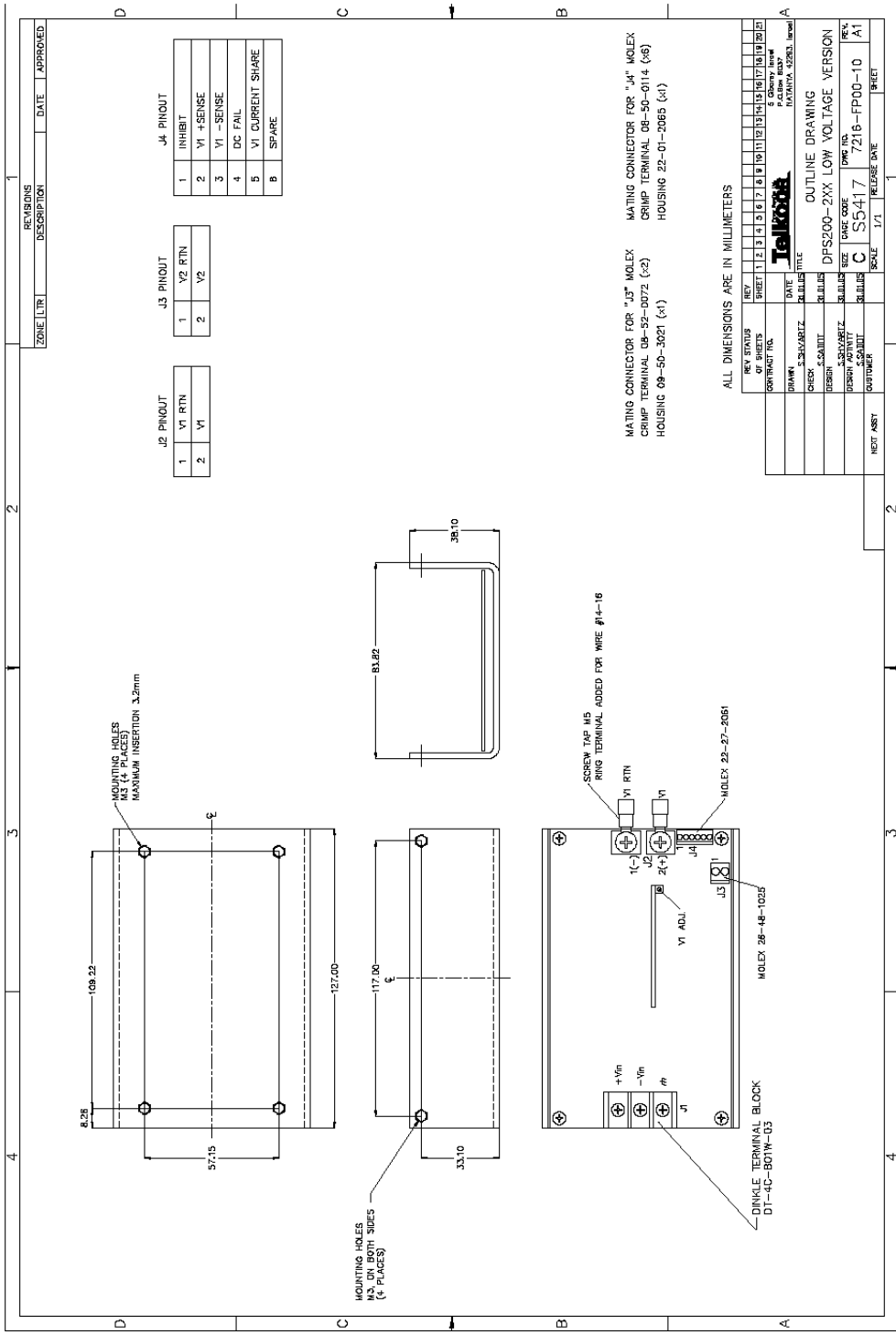
Dielectric Withstand:
 Input to Case: Input to case: 1000 VDC
 Input to Output: Input to output: 1500 VDC
 Output to Case: Output to case: 100VDC.
 Safety Agency Compliance: VDE 60950
 CSA C22.2 -234, LEVEL 3.
 EN-60950
 CE - MARK
 MTBF: 300,000 hours minimum per BELCOR 332, issue 6 specification @30 degrees C (Max. junction temperature 110°C, Capacitors 105°C)

Mechanical Dimensions:

Size 127mm x 84mm x 38.0mm
 Weight 650 Gr.
 Input DC Connector 3 Pin Terminal Block type DT-4C-B01W-03 by Dinkle
 Output Connector V1 (J2) Power Tabs – Screw tap M5
 V2 (J3) 2 Pin Molex Type 26-48-1025
 Command & Control Connector (J4) 6 Pin Molex Type 22-27-2061

CUSTOMER	SIZE	CAGE CODE	S5417	DWG. NO.	7216-DOC1-10	REV	A1
	SCALE		RELEASE DATE	13/5/2006	SHEET	4	OF 5

Outline Drawing



ZONE	LTR	REVISIONS	DESCRIPTION	DATE	APPROVED

J2 PINOUT	
1	V1 RTN
2	V1

J3 PINOUT	
1	Y2 RTN
2	Y2

J4 PINOUT	
1	INHIBIT
2	V1 +SENSE
3	V1 -SENSE
4	DC FAIL
5	V1 CURRENT SHARE
6	SPARE

MATING CONNECTOR FOR "J3" MOLEX
 CRIMP TERMINAL 08-52-0072 (x2)
 HOUSING 09-50-3021 (x1)

MATING CONNECTOR FOR "J4" MOLEX
 CRIMP TERMINAL 08-50-0114 (x6)
 HOUSING 22-01-2065 (x1)

ALL DIMENSIONS ARE IN MILLIMETERS

REV	STATUS	BY	DATE	APP'D
1				
2				
3				
4				
5				
6				
7				
8				
9				
10				
11				
12				
13				
14				
15				
16				
17				
18				
19				
20				
21				

CONTRACT NO. _____ DATE _____
 DRAWN: S. GIBLINZ TITLE: OUTLINE DRAWING
 CHECK: S. GIBLINZ Dwg. NO.: DFPS200-2XX LOW VOLTAGE VERSION
 DESIGN: S. GIBLINZ DATE CODE: C S5417
 HOUSING: S. GIBLINZ SCALE: 1/1
 PARTNO. 7216-PP00-10 SHEET: A1
 NEXT ASSY _____

CUSTOMER	SIZE	CAGE CODE	S5417	DWG. NO.	7216-DOC1-10	REV	A1
	SCALE	RELEASE DATE	13/5/2006	SHEET	5	OF	5