

**eFO600-1/2XX Series**

**Electrical  
Specification for:**

**Wide range AC/DC Dual/Single Output**

**Open Frame , 4x7 " ,600W Power Supply**

**Telkoor Part  
Number:**

**900-5XXX-0000**

CUSTOMER	SIZE	CAGE CODE	S5417	DWG. NO.	5248-DOC1-10	REV	B
GENERAL	SCALE	RELEASE DATE	04/03/2012	SHEET	1	OF	7

REVISION HISTORY					
Rev Level	Rev Date	Change Made	Reason for Change	Approved By	Effective
A	04/03/2012	RELEASE		S. Sadot	04/03/2012
B	04/03/2012	COVER plus FAN and FILTER outline drawing changed to Rev. C. See Page 6.	Need more space for the filter	S. Sadot	04/03/2012

Approvals		
	Name	Date
<b>Written by:</b>	<b>S. Sadot</b>	04/03/2012
<b>Engineering:</b>	<b>S. Sadot</b>	04/03/2012
<b>Sales &amp; Marketing:</b>	<b>H. Liber</b>	04/03/2012

CUSTOMER	SIZE	CAGE CODE	S5417	DWG. NO.	5248-DOC1-10	REV	B
GENERAL	SCALE	RELEASE DATE	04/03/2012	SHEET	2	OF	7

**Input:**

Input Voltage: 85 - 264Vac  
 Frequency: 47 - 63Hz  
 Inrush Current: 50A maximum, cold start at 25°C  
 Efficiency: 89% typical at 230Vac, full load  
 84% typical at 115Vac, full load  
 Power Factor: 0.96 typical at 230Vac, full load  
 0.99 typical at 115Vac, full load  
 Input Protection: Internal Line Fuse: IEC type 10A 250VAC SLO BLOW  
 Brown – Out: 75 to 300Vac  
 Leakage Current < 0.5mA @ 50/60Hz, 264Vac

**Output Voltages & Currents:**

Output	Output Voltage	Maximum Amps With 24CFM Forced Air	Peak Load
V1	+48V or 24V	48V/12.5A or 24V/25A	+ 10%
V2	+ 5V or +12V or 24V	5A Max or 50W Max	5.25A
V3 - Option	5V STANDBY	0.5A	1A

**Output:**

Maximum Power All outputs 250W for free convection base plate cooling, 600W with forced cooling air.  
 Adjustment range ±5%  
 Auxiliary standby output -Option 5 V @ 0.5A regulated, ± 4%  
 V2 Output 5V @ 5A ± 5% or 12V@5A ± 5%  
 Line Regulation: ±0.1%  
 Load Regulation: Less than ±0.5% for load changes from zero to full load  
 Ripple & Noise 1% pk-pk Max, 20Mhz BW Measured on 10uF tantalum in parallel with a 0.1uF ceramic capacitor on output connector.  
 Initial Set Point Tolerance: Vout ± 0.5%  
 Minimum Load Not required.  
 Overshoot & Undershoot: Less than 0.5% at turn ON and OFF  
 Transient Load Response: ±5% Max. Deviation for load change of 25% to 75%, at slew rate of 1A/µsec, recovery time less then 500uSec  
 Turn On Delay: 1 sec. Maximum  
 Hold-up Time: 16mSec minimum.  
 Turn-On Rise Time: 50mSec Typical  
 Over-current Protection: 110 to 135% of I Max, constant current limit, automatic recovery.  
 Over-voltage Protection: 120 to 135% above nominal (Latched Shut-Down) AC input must recycle to re-start.  
 Temperature Protection: Shutdown due to excessive internal temperature 95± 5°C automatic recovery.  
 Current Share: YES, Built In O-ring diode/FET  
 Remote Sense Compensates for 0.5V lead drop min. will operate without remote sense connected.

CUSTOMER	SIZE	CAGE CODE	S5417	DWG. NO.	5248-DOC1-10	REV	B
GENERAL	SCALE	RELEASE DATE	04/03/2012	SHEET	3	OF	7

**Signals & Commands**

Inhibit (on/off): Active low, output shut down.  
 DC Fail: TTL level Open collector active low when there is loss of regulation.  
 AC Fail (option): Open collector active low.  
 I<sup>2</sup>C bus option I<sup>2</sup>C Passive data: s/n, model no., revision, and/or user defined data

**Environmental Specifications:**

Temperature: Operating: -20°C to +50°C (Linear de-rating to 50% output power at 70°C  
 Storage: -40°C to +85°C.  
 Temperature Coefficient: 0 to 70°C ± 0.02%/°C  
 Cooling: 250W free convection cooling (base plate cooling). 500W forced air cooling (24CFM min.).  
 Humidity: Maximum 95% RH non-condensing  
 Altitude: Operating 6,000 ft. Non- operating 40,000 ft.  
 Vibration: Three orthogonal axes at 1 octave/min, 5 min dwell at four major resonances at 0.75G peak, 5Hz to 500Hz.

**Safety Regulatory & EMC Specifications:**

Meets FCC CLASS B, CISPR 22 CLASS B, EN55022 CLASS B with external line filter  
 EN61000-3-2 Harmonics  
 EN61000-3-3 Voltage fluctuations  
 EN6000-4-2 ESD +8KV AIR +4KV contact discharge, performance criteria B  
 EN61000-4-3 Radiated Immunity: 80-1000Mhz 3V/m, AM 80% (1KHz),criteria A  
 EN61000-4-4 Fast transient: 1KV for AC power port, 0.5KV for DC power I/O and signals Port, performance criteria B  
 EN61000-4-5 Surge: 2KV common mode and 1KV differential mode  
 EN61000-4-6 3VRMS, 80% A.M. BY 1kHz  
 EN61000-4-8 3A /m at 50Hz, performance criteria A.  
 EN61000-4-11 Voltage dips and interruption: 30% reduction for 10mSec –Criteria B, 60% For 100mSec. Criteria C, 95% reduction for 5000mSec Criteria C.  
 Dielectric Withstand:  
     Input to Case: 1500VAC  
     Input to Output: 3000VAC  
     Output to Case: 1500VDC  
 Safety Agency Compliance: UL 60950-2 , CB Certificate & Report , CE MARK (LVD).  
 MTBF: 300,000 hours minimum per BELCOR 332,issue 6 specification @30 degrees C.  
 RoHS: Category 6

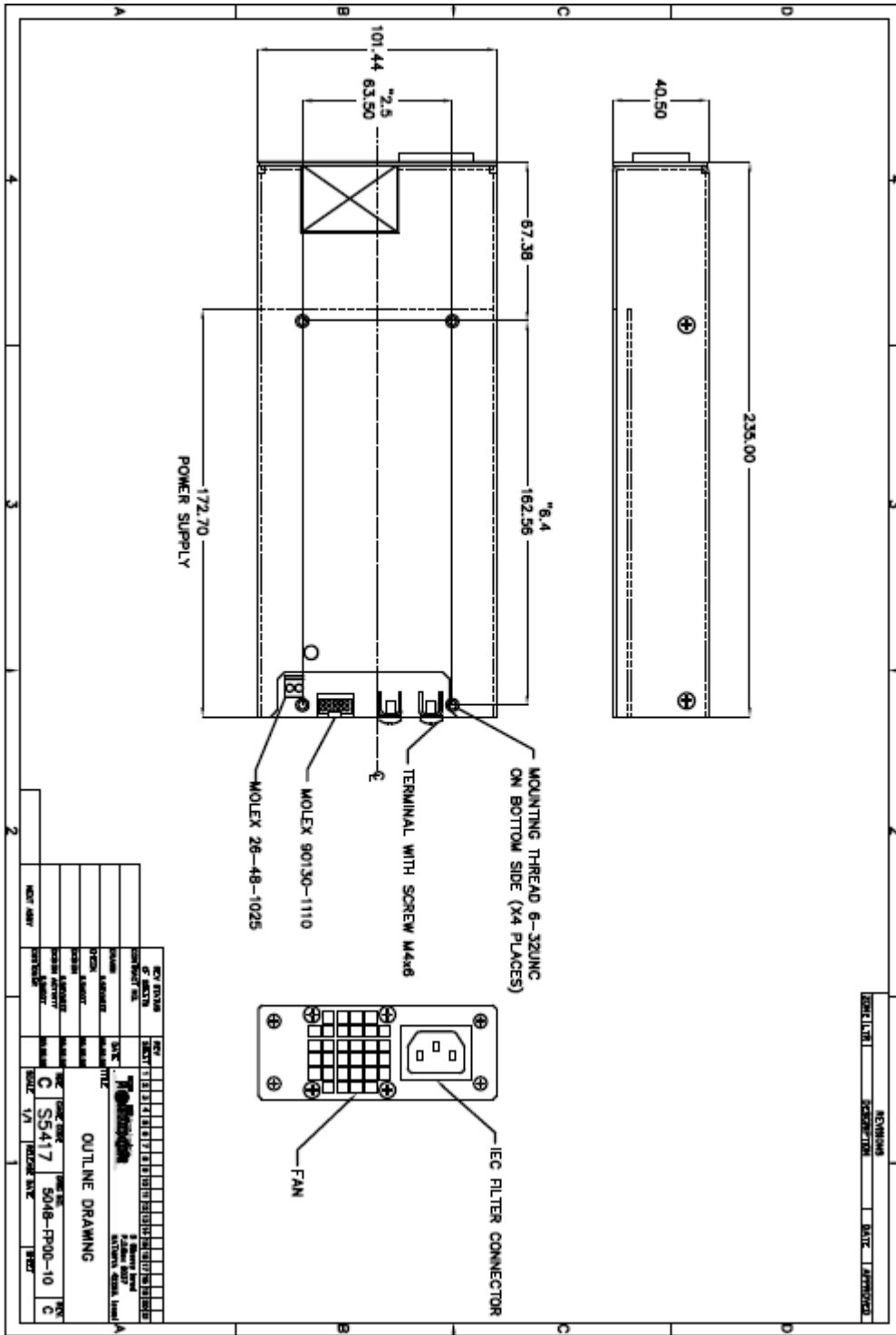
**Mechanical Dimensions:**

Size: 173 x 98 x 38.5(mm) (6.8" x 3.85" x 1.52")  
 Weight: 850 gr. Max. (27 oz)  
 Input Connector J1: Molex 3 Pin P/N 26-48-1055  
     Mating connector: Housing – Molex 09-50-3051 (x1)  
     Crimp terminal – 08-52-0113 (x3)  
 M&C Connector J3: Molex 16 Pin P/N 90130-1116  
     Mating connector: Housing 90142-0016  
     Crimp terminal 90119-2110 (x16)  
 V2 Connector J5: Molex 2 Pin P/N 26-48-1025  
     Mating connector: Housing – Molex 09-50-3021 (x1)  
     Crimp terminal – 08-52-0113 (x2)  
 Main output 48V Terminal : Screw M4 X6

<b>CUSTOMER</b>	<b>SIZE</b>	<b>CAGE CODE</b>	<b>S5417</b>	<b>DWG. NO.</b>	<b>5248-DOC1-10</b>	<b>REV</b>	<b>B</b>
<b>GENERAL</b>	<b>SCALE</b>	<b>RELEASE DATE</b>	<b>04/03/2012</b>	<b>SHEET</b>	<b>4</b>	<b>OF</b>	<b>7</b>



**COVER PLUS FAN AND FILTER OUTLINE DRAWING - OPTION**



CUSTOMER	SIZE	CAGE CODE	S5417	DWG. NO.	5248-DOC1-10	REV	B
GENERAL	SCALE	RELEASE DATE	04/03/2012	SHEET	6	OF	7

### J1 - INPUT CONNECTOR PIN ASSIGNMENT

Pin	Signal Name.	Description
1	AC SAFETY GND	GROUND
3	AC NEUTRAL	NEUTRAL
5	AC LINE	LINE

### J3 - OUTPUT CONNECTOR PIN ASSIGNMENT

Pin	Signal Name.	Description
1	GA-0	I2C GEOGRAPHIC ADD.
2	GA-1	I2C GEOGRAPHIC ADD.
3	GA-2	I2C GEOGRAPHIC ADD.
4	CURRENT SHARE	Current Share Signal
5	DC FAIL HIGH	TTL Level - Active High
6	DC FAIL LOW	TTL Level - Active Low
7	P- SENSE	+ Remote Sense
8	N - SENSE	- Remote Sense
9	IPMB - SDA	Serial Data I2C
10	IPMB - SCL	Serial Clock I2C
11	External 5V	External 5V for I2C
12	INHIBIT	Active Low
13	AC_FAIL	Open Collector – Active Low Option
14	RTN SIGNAL	5V Standby RTN
15	5V_OUT	5V Out Option
16	5V_OUT RTN	5V Out RTN Option

### J5 - OUTPUT CONNECTOR PIN ASSIGNMENT

Pin	Signal Name.	Description
2	V2 Out	5V/5A or 12V/5A
1	V2 Out RTN	5V/5A RTN

CUSTOMER	SIZE	CAGE CODE	S5417	DWG. NO.	5248-DOC1-10	REV	B
GENERAL	SCALE	RELEASE DATE	04/03/2012	SHEET	7	OF	7